



REBOUND CHECK

Schob型回弹测试仪配有触摸屏显示系统，用于计算硬度在30至85 IRHD之间的弹性体的回弹性。

参考标准: ASTM D7121; ISO 4662;

注意：遵守某些标准可能需要可选的附件或设置。



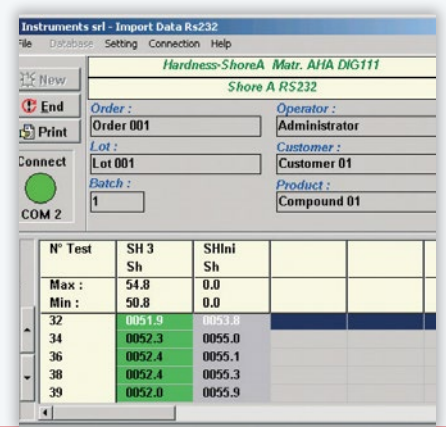
回弹性是能量输出与仪器摆锤和试件之间撞击时所施加的能量比。此测量提供关于弹性体动态行为的有用指示。试件、摆锤和固定工具的特性由确保可重复结果的标准定义。

通过测量撞击后摆锤的回弹角进行测量。该仪器可直接读取回弹性值。
触摸屏显示器允许：
• 显示对样品进行的5次测试的结果
• 计算结果的平均值和标准偏差

- 校准仪器的角度读数
 - 导出数据
- 样品架**，符合ISO 4662和ASTM D 7121标准，配有便于插入和取出样品的工具。

Test method: Recording of 5 test results (Rebound %) and automatic calculation of mean and standard deviation.
Sensitivity: 0.2 %
Control Display: Touch Screen display for instrument setup and results display; The display permits to: • display the results of 5 tests • calculate mean and standard deviation of the results • calibrate the angle reading of the instrument •

export the data
Display Dimensions: External dimensions W 92 x D 150 x H 30 mm - Usable Area 60 x 100 mm
Data transmission (option): Software, compatible with Windows 10, for import of test results and data storage into SQL database ; The connection between the instrument and the pc is made with USB cable.



Instruments srl - Import Data Rs232				
File Database Setting Connection Help				
New				
End				
Print				
Connect				
COM 2				
Hardness-ShoreA Matr. AHA DIG111				
Shore A RS232				
Order :	Order 001	Operator :	Administrator	
Lot :	Lot 001	Customer :	Customer 01	
Batch :	Batch 1	Product :	Compound 01	
N° Test	SH 3 Sh	SHlni Sh		
Max :	54.8	0.0		
Min :	50.8	0.0		
32	0051.9	0053.8		
34	0052.3	0055.0		
36	0052.4	0055.1		
38	0052.4	0055.3		
39	0052.0	0055.9		